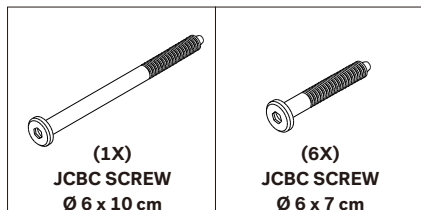


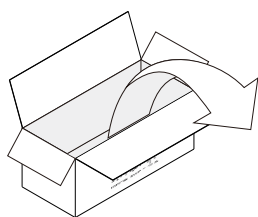
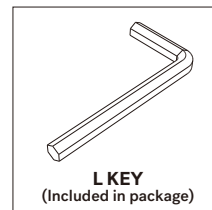
CIRCLE DINING TABLE ASSEMBLY INSTRUCTIONS FOR DINING TABLE INSTALLATION



HARDWARE ENCLOSED

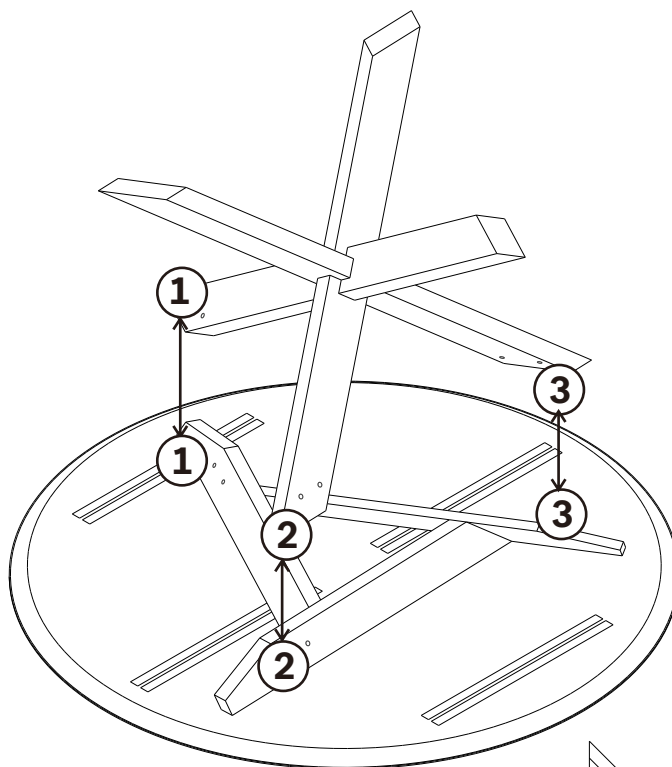


TOOL ENCLOSED

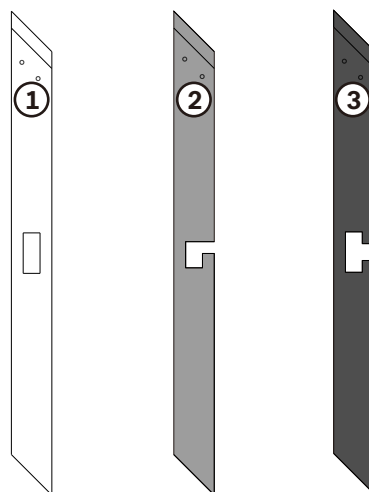
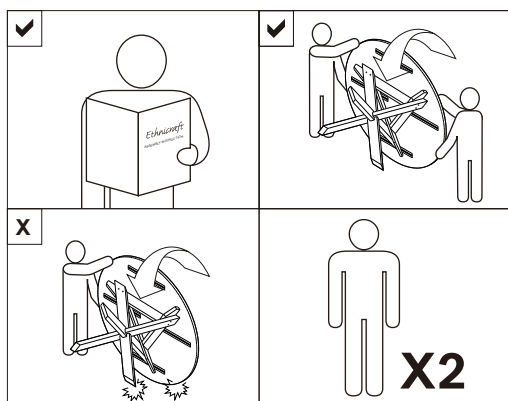


IN YOUR PACKAGE :
ASSEMBLY INSTRUCTION
HARDWARE (AS LISTED ABOVE)

PARTS TO BE INSTALLED
1. TOP PANEL 1pc
2. LEG 1 set



NOTICE

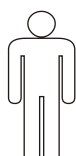


⚠ ALWAYS REFER TO HOLE POSITION & STICKER

SYMBOLS



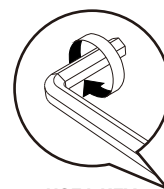
DIRECTION



NUMBER OF
PERSONS NEEDED



USE HAND

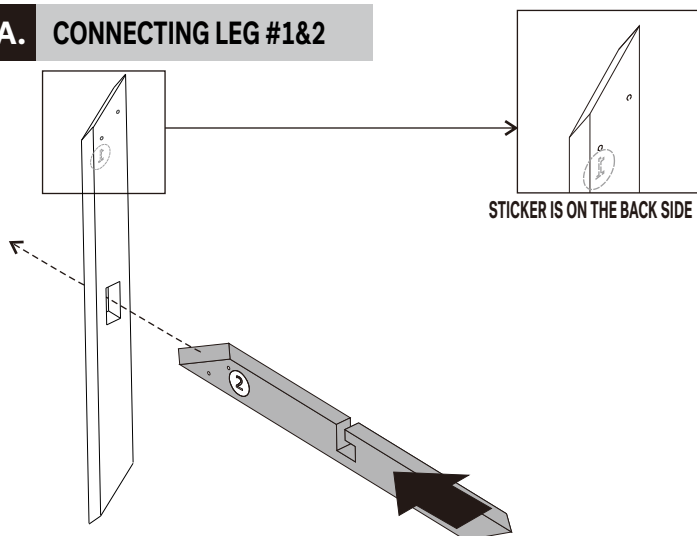


USE L KEY
TO TIGHTEN

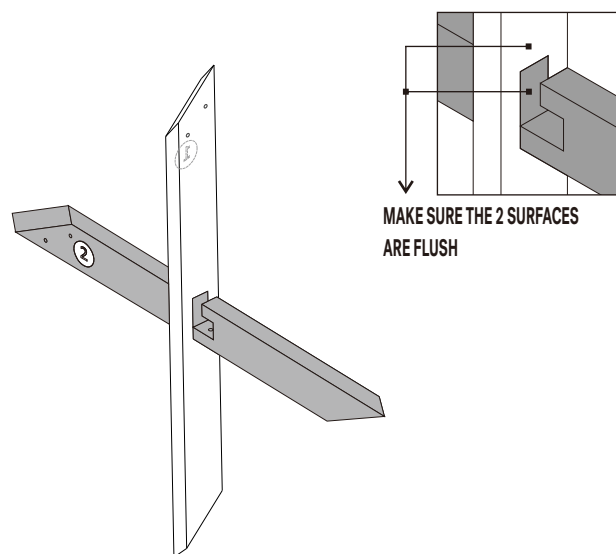
CIRCLE DINING TABLE ASSEMBLY INSTRUCTIONS FOR DINING TABLE INSTALLATION



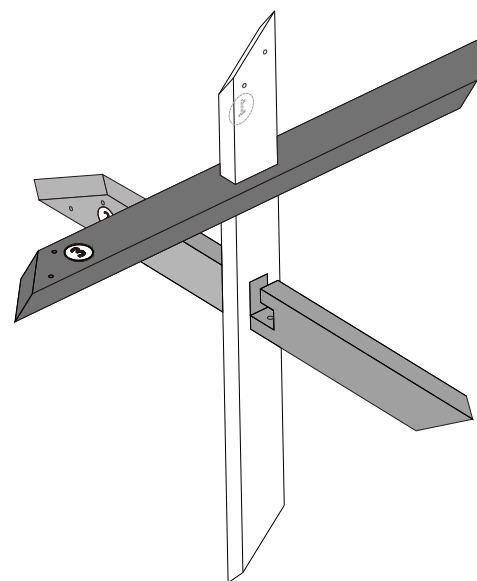
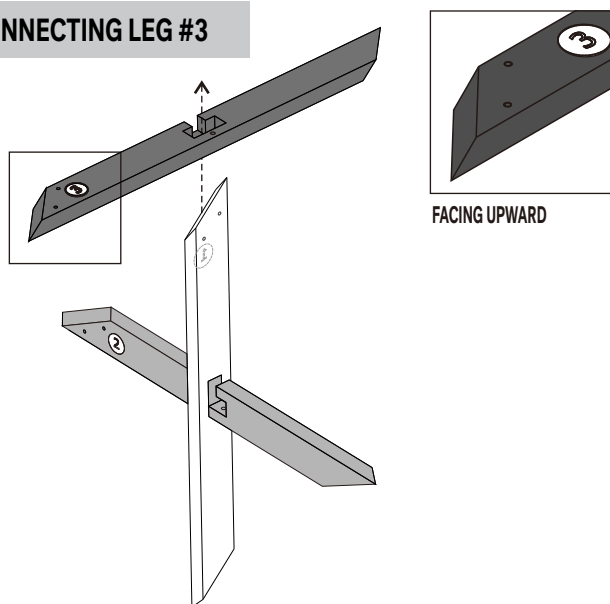
A. CONNECTING LEG #1&2



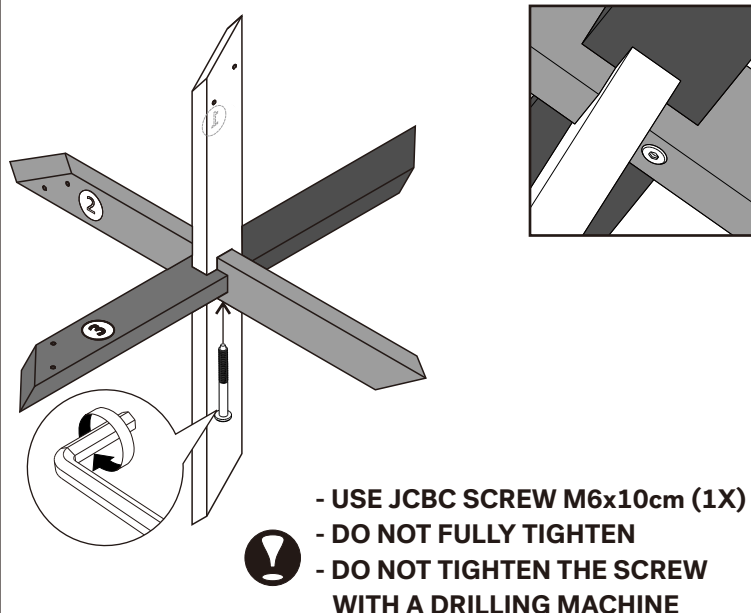
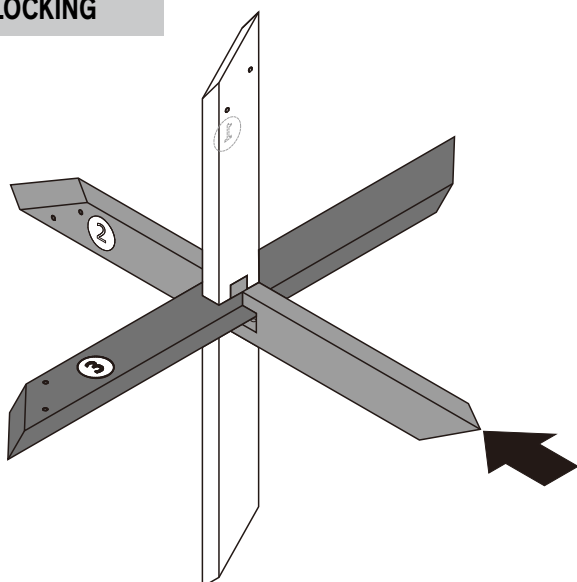
! - ALWAYS REFER TO HOLE POSITION & STICKER



B. CONNECTING LEG #3



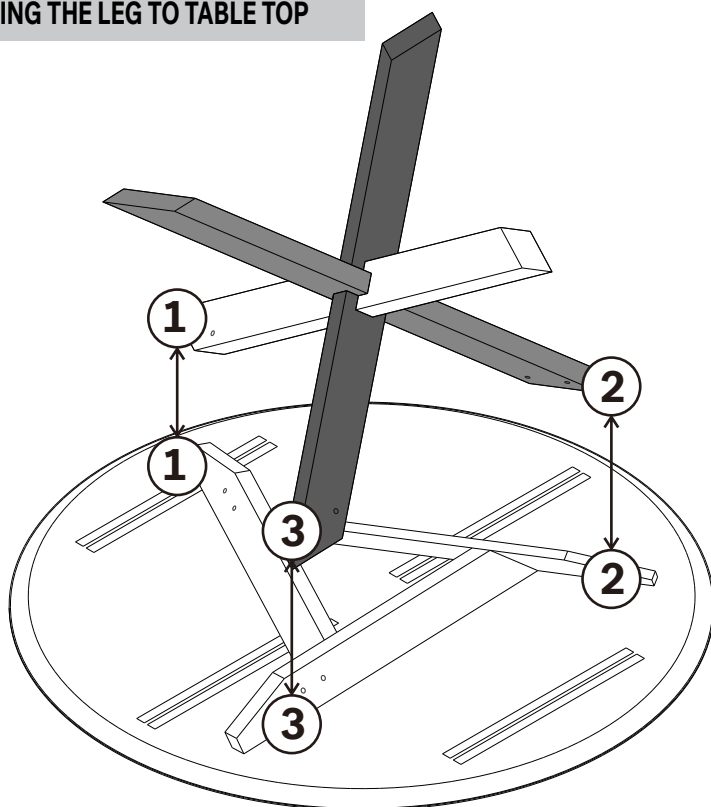
C. LOCKING



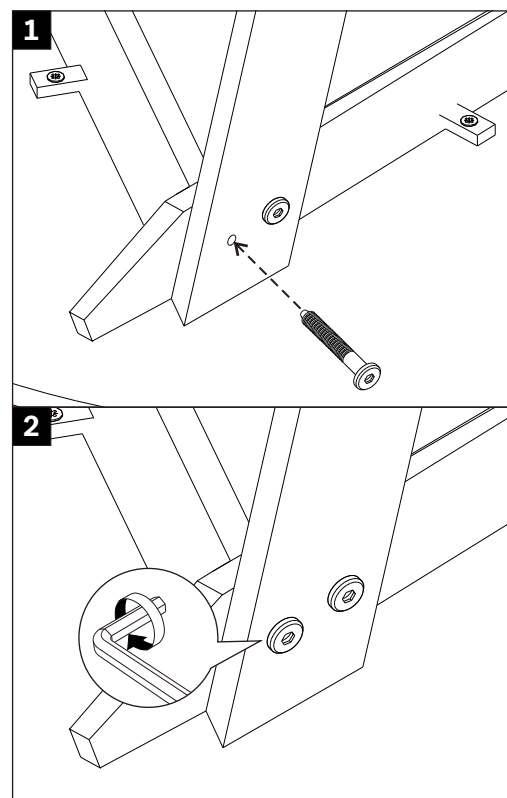
CIRCLE DINING TABLE

ASSEMBLY INSTRUCTIONS FOR DINING TABLE INSTALLATION

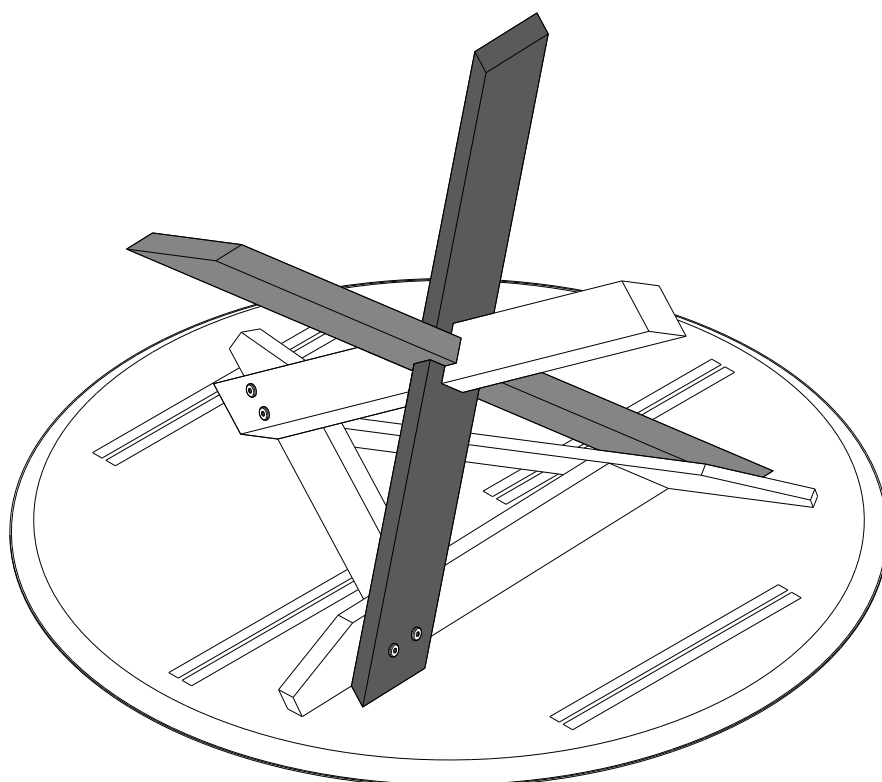
D. INSTALLING THE LEG TO TABLE TOP



- USE JCBC SCREW M6x7cm (6X)
- DO NOT FULLY TIGHTEN WHEN ASSEMBLY THE SCREW
- DO NOT TIGHTEN THE SCREWS WITH A DRILLING MACHINE



E. FINISH



- TIGHTEN FULLY WHEN ALL SCREWS ARE IN ITS POSITION
- DO NOT TIGHTEN THE SCREWS WITH A DRILLING MACHINE

